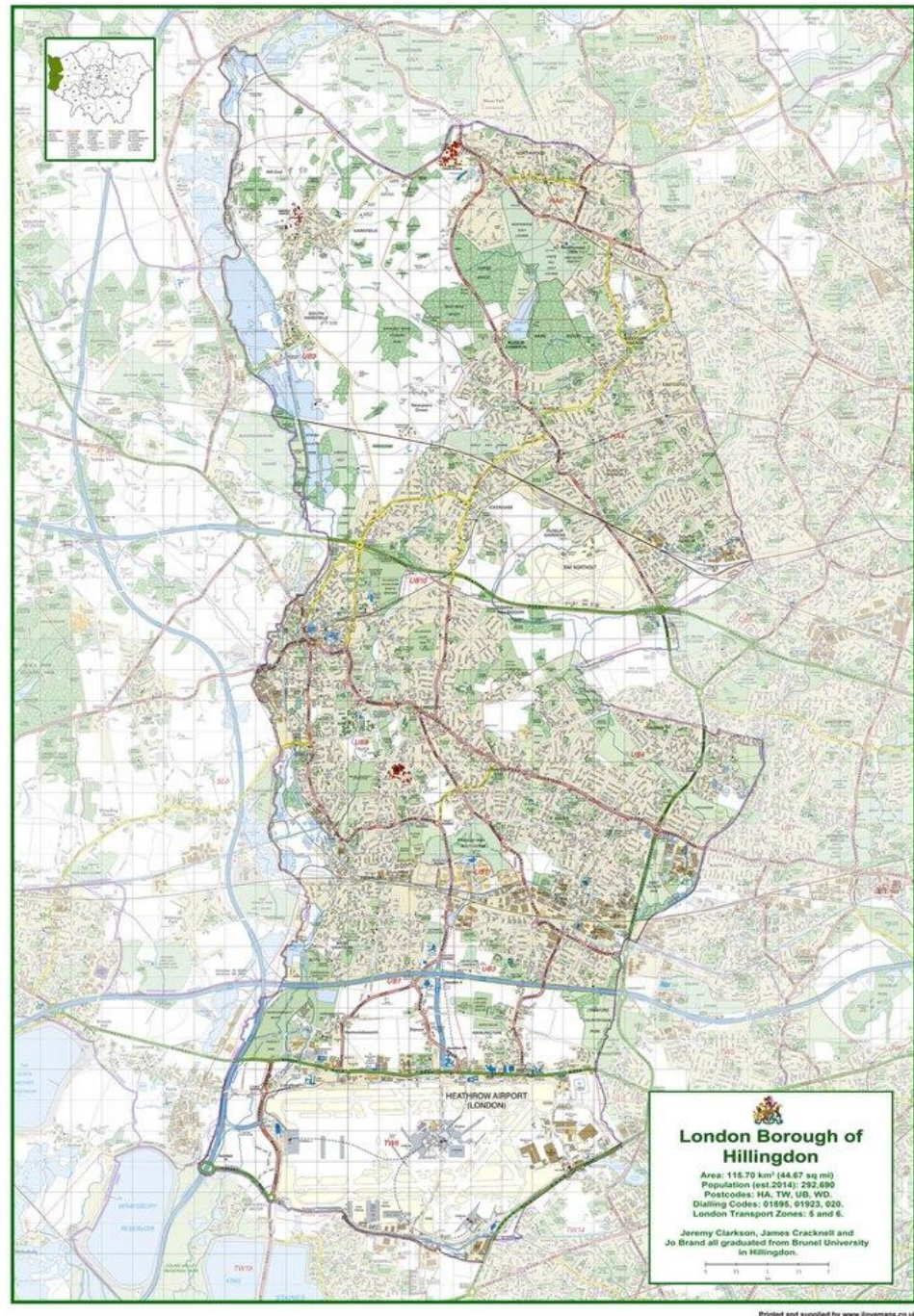




# Creating Opportunities & Influence Through Partnerships

Steve Curry

Chief Officer – Harlington Hospice & H4All



## London Borough of Hillingdon

- Population 310k
- Borough wide 40% BME
- South of Borough 60% BME
- 8 year gap in life expectancy from North to South
- Heathrow Airport & Major UK / European Offices

# 3<sup>rd</sup> Sector Providers

- Well established Chief Officers group
- Loose consortium - Hillingdon4All
- Protect Hillingdon organisations during contracting



2013



2014



2015



2016



2017



2018

# Develop Partnerships

- Mapped 3<sup>rd</sup> Sector End of life pathway
- Changes in procurement – NHS & Local Authority
- Strategic Alignment
- Hospice invested my time to develop the partnership



2013



2014



2015



2016



2017



2018



# Developing a formal Joint Venture

- NHS Pioneer Programme
- Needed a Credible Offer
- Size mattered
- CCG looking for significant change
- We approached Hillingdon CCG



2013



2014



2015



2016



2017



2018

# Developing a formal Joint Venture

- 5 Chief Officers meet regularly
- Outline plan to each Board
- Joint Boards workshop March 2014
- Chief Officers worked up proposals
- Shadow Board - February 2015



2013



2014



2015



2016



2017



2018

# Developing a formal Joint Venture

- Local Authority also like the concept – opportunity to consolidate contracting
- Community Interest Company in Sept 2015 – Joint Venture Agreement March 2016
- Negotiated a £440k for Wellbeing Service from April 2016



2013



2014



2015



2016

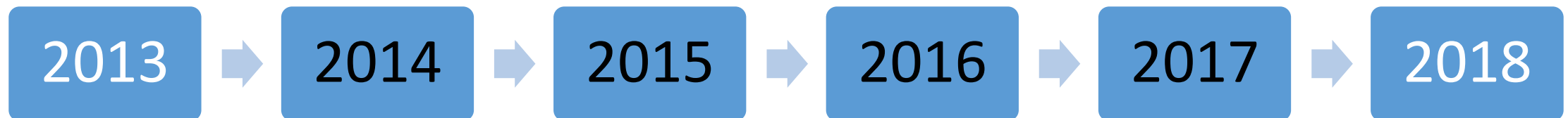


2017



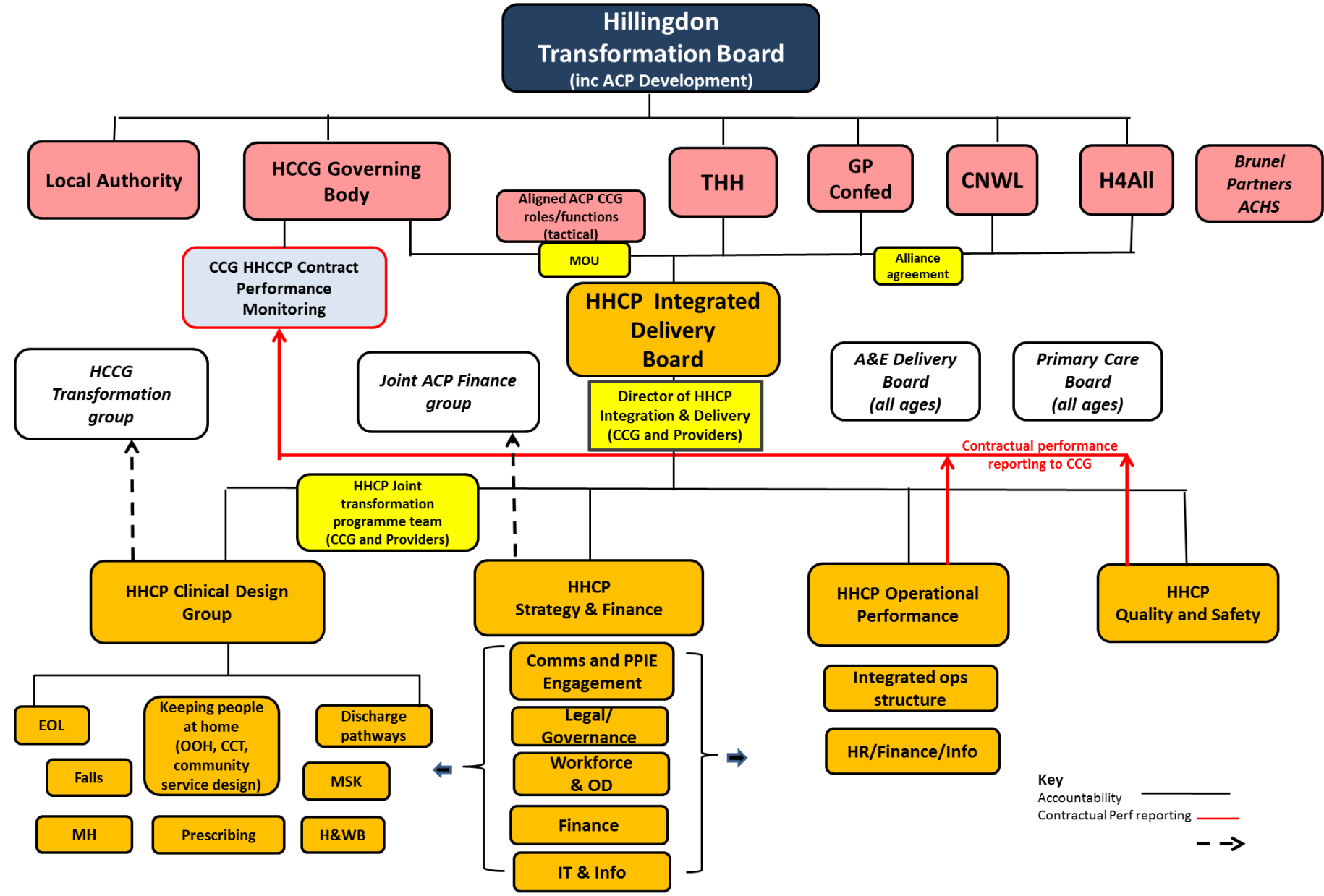
2018

# Accountable Care Partnership





**GOVERNANCE STRUCTURE FOR HILLINGDON ACP DEVELOPMENT with CCG**  
**18-19 draft for discussion with CCG & HHCP**



# Impact for H4All

- Seats at **ALL** the important tables
- Pilots
  - GP signposting
  - Hard to reach Diabetics
- Social Prescribing – Big Potential
- Embedding Services in Clinical Pathways - MSK
- High Intensity Users Service
- Active Case Management



2013



2014



2015



2016



2017



2018



**H4All  
BOARD OF DIRECTORS**

Angela  
Wegener  
DASH

Christopher  
Geake  
Hillingdon MIND

Julian Lloyd  
Age UK Hillingdon

Steve Curry  
Harlington Hospice

Sally Chandler  
Hillingdon Carers

**H4All Integrated  
Counselling  
Service**

Angela Stangoe  
Head of  
Counselling Service

Senior Counsellor  
Clinical Supervisor  
Counsellors  
Counselling  
Administrator  
(External Supervision)

**Shared Finance  
Function**

Leslie Hart  
Shared Finance  
Manager

**Key House  
SLA**

Vicky Peck  
H4All  
Administrator

**Wellbeing  
Service**

Dal Jammu  
Wellbeing  
Service Manager

Debbie Clark  
Shelley Sweeney  
Bharti Majithia  
Debbie Dollery  
Emma Williamson  
Sally Spring  
Sonia Dhillon  
Sue Furzer  
Carmen Dias  
Valerie Graham

**Volunteering  
and  
Infrastructure**

Natasha Aman  
Volunteer  
Development  
Officer

# Learning so far

- Clear Reason & Strategy
- Invest Time & Learning
- Build Trust
- “Sunset” Clause for agreements
- Opt in/out of Projects
- Member of many Teams
- Taking the Initiative
- Be Bold & Creative in thinking and ambition



Steve Curry

Chief Officer, Harlington Hospice

[scurry@harlingtonhospice.org](mailto:scurry@harlingtonhospice.org)

H4All

<http://www.h4all.org.uk>

